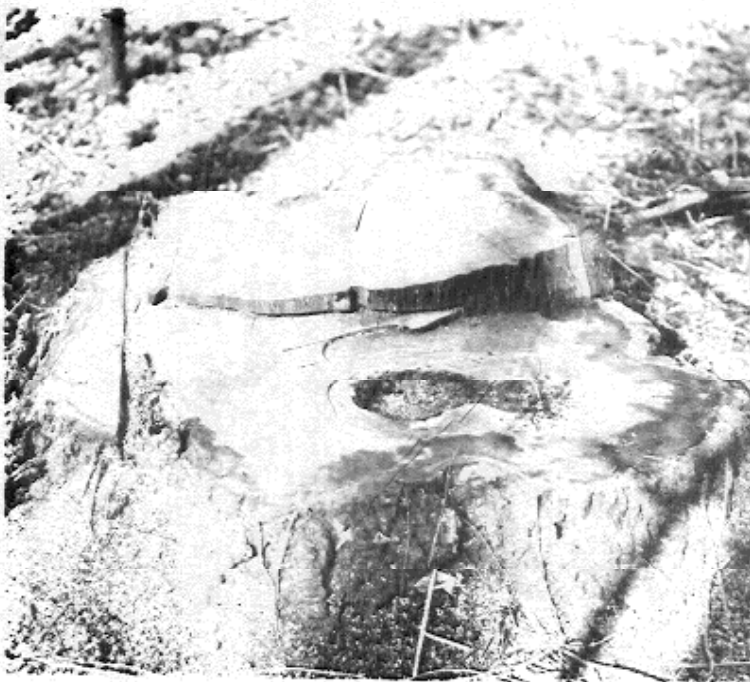


Matching Saw Cuts and Log Ends - S. Molnar - Ohio BCI

Every winter and early spring brings out timber thieves that prowl the Ohio Woodlands and scout out large walnut trees, particularly on large farms that may have access from several different roads. These thieves almost always are using a cover as legitimate timber buyers and have the necessary heavy equipment to move such stolen logs. On a recent case, the Sheriff of Greene Co., requested the author to assist on such a theft where 3 trees were stolen and several logs were located in the next county at a rail point lumber yard. The examinations had to be made as soon as possible, as the logs were scheduled to be loaded & shipped to So. Carolina, bound for a veneer plant in Germany. The Sheriff did not want to delay shipment if these were not the stolen logs.

Using a 4 X 5 camera with a P/N polaroid film pack, photos were taken of the stumps in the fields, and photos were taken of the logs at the lumber yard. It was not hard to see that these were the stolen logs. The suspect was located, arrested, and confession obtained. He was wanted in several other Ohio Counties, and was out on bond in Kentucky for similar offenses.



Stump in the woods



End of log - Reversed  
photo

The identification was confirmed by matching marks on the stump and log where the chain saw was shifted in position and direction of cuts, and by the patterns of the rotted and worm eaten areas