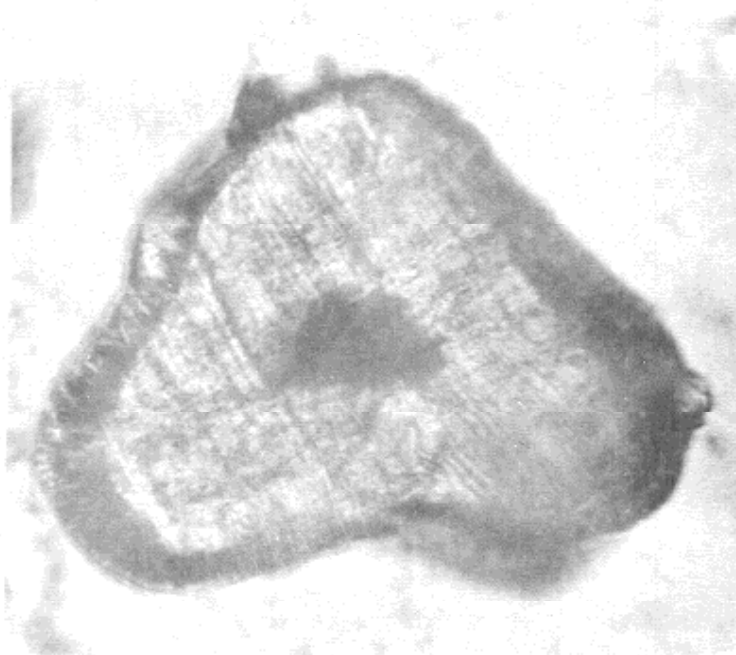
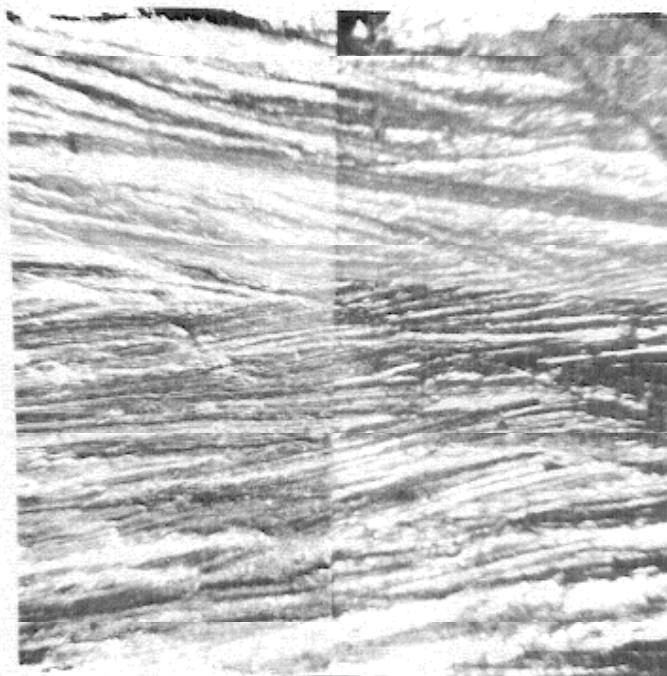


Unusual Tool Mark Impression Identification - (S.Molnar-Ohio BCI)

An unusual set of impressed tool marks were found on a fragment of a safe combination spindle. A burglary suspect's tools were being checked. In this set of tools were numerous punches of varying sizes and designs, new and old, but were found to be negative by tool mark examination or by visual inspection. The last item found lying in the bottom of the bag, a piece of 3/8-inch threaded rod, slightly bent, was found to be the incriminating tool that would connect this man to the safe forcing. The marks shown are matched evidence and test impressed marks of the hacksaw blade cuts left on the end of the threaded rod when sawed to approximately 12-inch length. The marks on the spindle were only a partial registration of the total, an area of about 3/16-inch circle.



Evidence

Test

"Whatisit"

The Triangular "Whatisit" is a conversation piece at the Ohio BCI. No one has guessed it outright as yet. Examine closely and make a guess, then turn this page upside down.

This is an enlarged photomicrograph of the end of a human whisker hair segment, showing the "tool marks" of the razor that had cut the hair in two. Did we identify this to the razor? No.