

Identification of a Compensated Glock Pistol

A Case Report By Kurt Moline, Bureau of Criminal Apprehension Forensic Science Laboratory, St. Paul, MN

Key Words: Compensated Pistols, Glock Pistols, Identification, Ported Barrels

ABSTRACT

A Glock Model 22C 40 S&W caliber pistol was submitted for comparative examinations. Examination of the test fired bullets showed areas on the bullets with reproducible stria attributed to the ports of the barrel marking the bullet in passage.

Recently, an officer involved shooting case was submitted to the Laboratory for examination. The officers' firearms were both 40 S&W caliber Glock pistols, one a Model 22 and the other a Model 22C. Both pistols were polygonally rifled with six lands and grooves with a right hand twist. The Model 22C is a compensated pistol with two elongated oval ports in the barrel approximately an inch from the muzzle. (Photo #1) Glock lists nine different models of compensated pistols. They market these pistols to "...recoil sensitive..." shooters.



Photo #1: Compensated Glock Pistol.

The pistols were test fired and bullets were recovered. The test fired bullets from the Glock Model 22 were unremarkable. On the bullets recovered from the Glock Model 22C, two areas of relatively coarse stria were easily observed without magnification. These markings, which were reproduced on all of the test fired bullets from this pistol, were attributed to the ports of the barrel. The bullets were compared and the areas showed very good agreement with each other. (Photo #2)

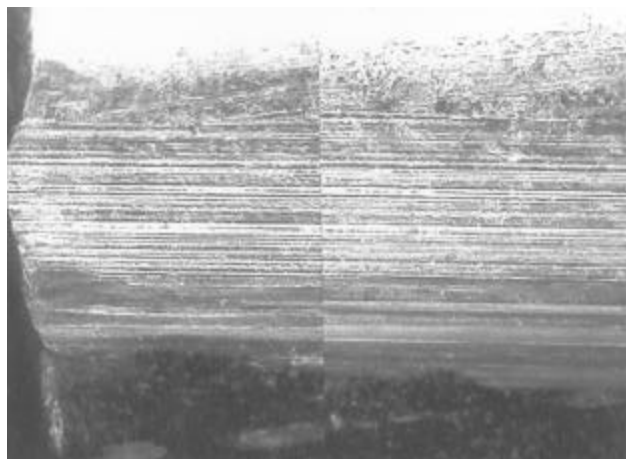


Photo #2: Bullet Identification.

Because the test fires from the Model 22C were easily differentiated from the test fires from the Model 22, this may be an interesting class characteristic of these models of pistols. This characteristic could assist firearms examiners when asked to give a list of possible firearms in a "no gun" type of case.